

Safety Beacon

Department of Environmental Health and Safety

Volume 8, Issue 2 - Summer 2012 www.udel.edu/ehs (302)831-8475

Earth Day, Ag Day, Creek Fest, Oh My!



This Spring, the UD storm water program has been busy with the educational component of the program. A storm water booth was available at all 3 events to provide information and brochures to members of the public regarding ways in which they can keep storm water clean and reduce pollution during rain events.

Children were naturally drawn to the booths to decorate scratch-off turtles. While the children were busy being creative, we spoke to the children and parents about rain barrels, reducing lawn fertilizers, and disposing of pet waste. Brochures were also available to reinforce the message. A bean bag toss to illustrate the proper disposal of oil and pet waste was also a hit for children at Creek Fest.

Three people from the Newark area were the lucky recipients of a free drawing for 2 flower baskets courtesy of Leon's Garden World and a rain barrel courtesy of the UD storm water program.

So remember....only rain in the storm drain.

Are You Planning a Renovation in Your Department?

Since the Academic pace slows down a little during Summertime, it is often the time for construction and renovation work to accelerate. There are a few things you need to consider to ensure your renovation project this summer is safe and environmentally sound.

The first step in any renovation is to contact Facilities Planning & Construction (FP&C) which will then assign a project manager. FP&C in turn will contact the Department of Environmental Health and Safety (EHS) to determine what safety and environmental issues need to be addressed during the renovation. This could include surveying for hidden asbestos, upgrading fire and electrical systems, or even making sure old material is properly disposed.

If for some reason FP&C is not involved in your project, you need to contact EHS directly. Our department will help you assess your project to determine what safety issues you need to address.

The Environmental Health and Safety Department is happy to provide safety services for your Departmental needs. Please contact us at 831-8475.

Inside this issue:

Earth Day, Ag Day, Creek Fest, Oh My!

Are You Planning a Renovation in Your Department?

June is National Safety Month

Did you know?
- On Campus Healthcare

Look Who's New in EHS

What is Asbestos?

AED's

Did you know?

On-Campus Healthcare now available for On-the-Job Injuries

UD employees with non-emergency work-related injuries can be treated at the Nurse Managed Health Center (NMHC). The employee's supervisor should call 831-3195 to notify the NMHC that an injured employee is being sent over and to describe the nature of the injury. NMHC will verify treatment authorization for any injured employees who visit the office without pre-notification. Depending on the nature and severity of the injury, NMHC will make every effort to fit the employee into the schedule as soon as possible. If there is any doubt as to the severity of the injury, call 9-1-1 and arrange for transportation to an emergency care facility. Employees treated at an emergency care facility can schedule follow-up appointments and treatment at the NMHC.



Follow-up care at the NMHC focuses on providing individualized comprehensive healthcare to enable the employee to return to work in a timely manner.

Workers compensation claims are coordinated with the UD Labor Relations office with the goal of reduced stress for the employee and department when dealing with claims and follow-up treatment from an on-the job injury.

The NMHC is located on main campus in McDowell Hall, room 119. Free parking is available next to the building. Office is open 8-4pm Monday-Thursday and 8-12pm on Friday.

NMHC Website: www.udel.edu/nmhc

Look Who's New at EHS!

Environmental Health and Safety welcomes Ed Jackson to UD! Ed started with the EHS department on Monday, March 26th as an Occupational Health and Safety Specialist. He is primarily responsible for management of the asbestos and lead paint programs. Ed was most recently employed as an assistant project manager by Environmental Testing, Inc., an environmental consulting and testing laboratory in Middletown, Delaware. A UD graduate with a degree in Environmental Science, he has over 6 years of experience in the management of environmental projects.



Ed is also an avid fisherman and enjoys kayaking, often at the same time! Please welcome Ed to our EHS team!

June is National Safety Month

Each June, the National Safety Council celebrates National Safety Month. This year's theme is "Safety 24/7". Safety should not be limited to your activities on campus: did you know that 9 out of 10 fatal accidents occur away from one's place of work? Take your safety training home with you: wear proper protective equipment when doing your chores, keep walking paths free of tripping hazards, use correct lifting techniques, buckle up whenever you get into a car, and don't talk on your cellphone (or text!) when driving.

More hints about off-the-job safety can be found at the National Safety Council Website:

http://www.nsc.org/nsc_events/Nat_Safe_Month/Pages/home.aspx

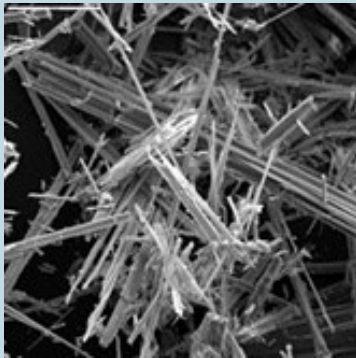
What is Asbestos?

Asbestos is a term for a group of naturally occurring minerals. Because of its many attractive qualities, such as insulating properties, low electrical conductivity, water and chemical resistance, and high tensile strength, along with its low cost, asbestos has been used in many building materials. Asbestos can be found in many diverse settings, including boiler rooms in the form of insulation on pipes and tanks, on ceilings as spray-on fireproofing, in floor tiles, in mastics, as part of built-up roofing, and in concrete pipes and panels. This is not a complete list as asbestos has been reportedly used in over 3,600 products.

Asbestos was used extensively until the EPA began banning most types of asbestos from 1972-1990 due to health concerns resulting from its unregulated manufacturing and application. It is difficult to recognize if a material contains asbestos by just looking at it; only laboratory analysis can confirm its presence.

Materials that contain asbestos will not become a health concern if they are not disturbed and are kept intact. However, asbestos containing material may be disturbed, such as by building renovations or demolitions, and the material must first be removed by trained personnel using special engineering controls and methods before construction can begin.

If you see any damaged or suspect ACM during the course of maintenance activities or are planning a renovation/ demolition project on campus please call Ed Jackson in EHS at 302-831-0690.



AEDs- Miniature Life Savers

Automated external defibrillator (AED) use can make the difference between life and death.

According to the American Heart Association, a sudden cardiac arrest victim requires defibrillation to stop ventricular fibrillation, an often-fatal heart condition. The only known treatment for sudden cardiac arrest is a shock from a defibrillator, administered as quickly as possible. An automated external defibrillator enables rapid application of this life-giving shock.

The sooner the defibrillation shock the better. It is estimated that more than 95 percent of cardiac arrest victims die before reaching the hospital. A victim's chances of survival are reduced by 7 to 10 percent with every minute that passes without CPR and defibrillation because each minute the brain goes without oxygen diminishes the likelihood the victim will survive.

There are many AEDs located in public areas throughout campus. Even though EHS recommends that AEDs be used only by someone trained in CPR, you should know the location of the nearest AED in case you need to retrieve it during an emergency. The link at the end of this article will help you find AEDs throughout campus.

If you want to learn how to use an AED, contact EHS and enroll in a Heartsaver CPR/AED class.

AED locations can be found at: <http://www.udel.edu/ehs/AEDinventory3-29-11.pdf>

To enroll in a Heartsaver CPR/AED class: <http://www.udel.edu/ehs/ehsregistration/heartsaver.html>

